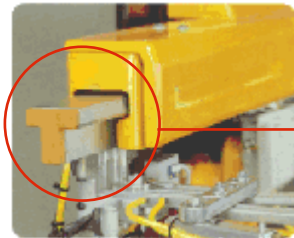


UNMATCHED PERFORMANCE



RY ROBOT SYSTEM

The RY system's adaptable configuration makes it flexible enough to meet the changing needs of the pressroom. With more than 6,000 units sold, this powerful, high-performance unit has long been a cost efficient solution for a variety of pressroom demands.



The newly-designed T-shape feed bar offers high speed and reliability as well as lower friction and vibration.

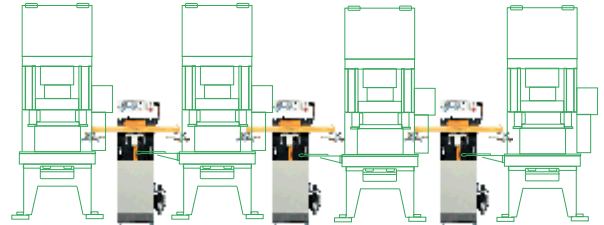
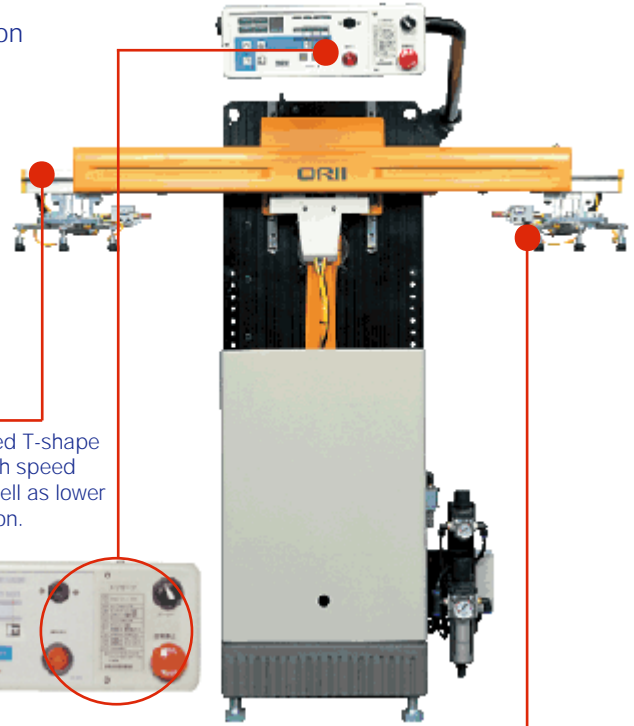
The operation board has a built-in failsafe design which guards against misoperation.



A wide variety of hands are available to support exclusive use of one hand for one workpiece, which minimizes changeover time. The RY offers a variety of pick up systems utilizing vacuum cups in combination with adaptable fingers and holders to provide the best match for the application.



The RY system has no limitations when it comes to line length or compatibility with other processing lines. Flexible line layouts such as angled configurations are possible with adaptable attachments and peripheral components.



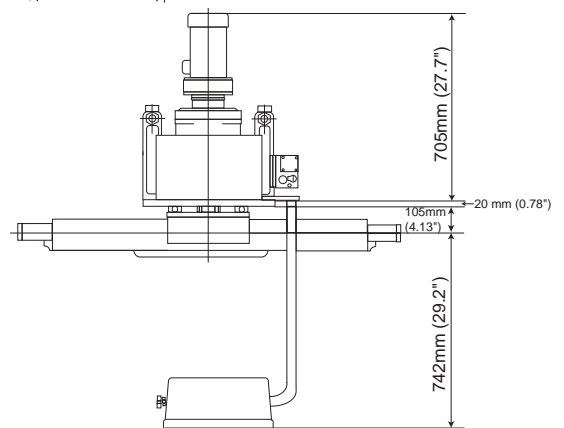
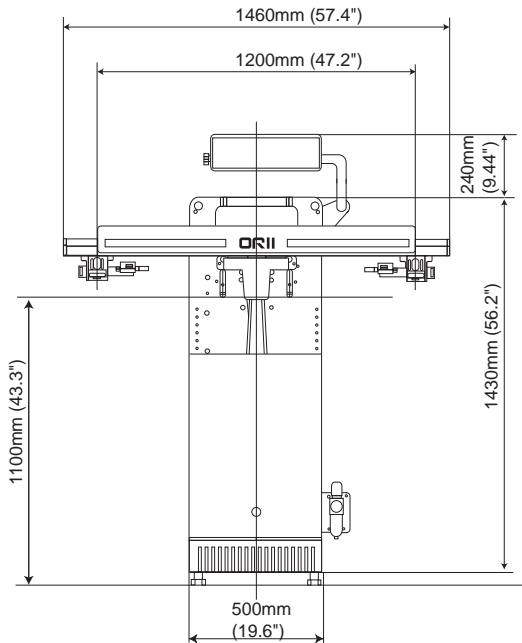
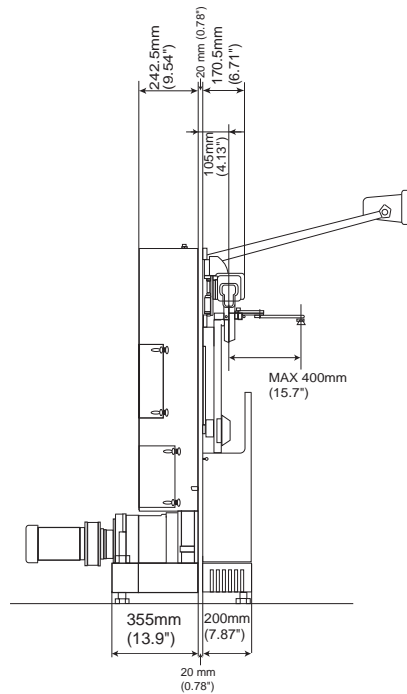
An industry leader in pressroom automation for more than 30 years, Oriimec provides robots, transfer systems, coil handling equipment and straightener/feeder combination units to customers worldwide. Manufactured in Japan, the Orii line of equipment is engineered to meet the specific needs of each of our customers. All Orii products sold in the U.S. are paired with expert service and technical support from our Erlanger, KY office.

UNMATCHED PERFORMANCE



RY ROBOT SYSTEM

Model	RY-080S3	RY-100S3	RY-120S3	RY-120L3
Feed Length	760-800 mm 29.9"-31.5"	801-1000mm 31.6"-39.3"	1001-1200 mm 39.4"-47.2"	1201-1500 mm 47.3"-59.0"
Vertical Stroke	30-65 mm 1.18"-2.6"	30-65 mm 1.18"-2.6"	30-50 mm/40-65 mm/60-100 mm 1.18"-1.97"/1.57"-2.6"/2.36"-3.94"	
Cycle Time	1.4-1.9 seconds	1.5-2.0 seconds	1.7-2.2 seconds	2.5-3.0 seconds
Max. Workpiece Weight (per Hand)	2.0 kg 4.4 lbs	2.0 kg 4.4 lbs	4.0 kg 8.8 lbs	4.0 kg 8.8 lbs
Repeatability	±0.2 mm ±0.007 "	±0.2 mm ±0.007 "	±0.3 mm ±0.011"	±0.3 mm ±0.011"
Motor Power (per motor)	0.4 kw	0.4 kw	0.75 kw	0.75 kw
Workpiece Pick Up	Vacuum or Electromagnet			
Weight	400 kg 882 lbs	400 kg 882 lbs	500 kg 1102 lbs	500 kg 1102 lbs



Oriimec Corporation of America
1840 Airport Exchange Blvd. #200
Erlanger, KY 41018
U.S.A

Phone:
888.746.3320 (toll free)

Tel: 859.746.3318
Fax: 859.746.3319
Email: info@oriimec.com
Website: www.oriimec.com

THE SOLUTIONS LEADER IN THE METAL AND WIRE FORMING INDUSTRIES